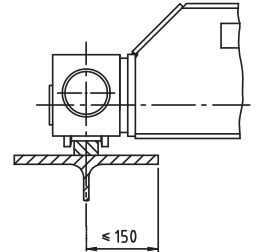
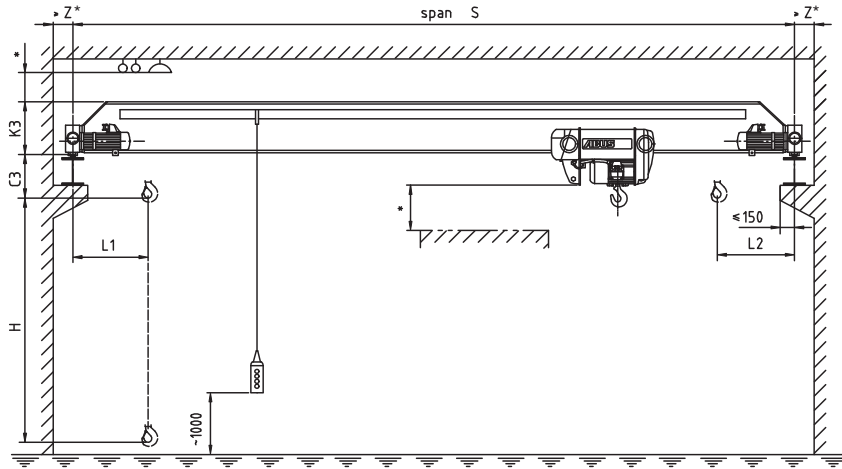
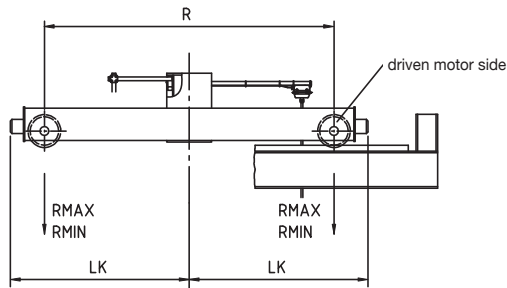


ELV/ELK Single Girder Cranes



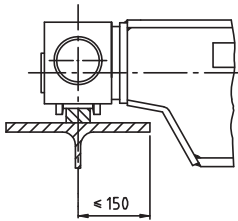
* Safety distance according to national regulations.



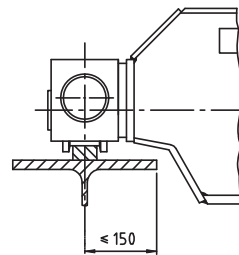
Variation 3:

The measurements K3 and C3 are ABUS standard measurements and can be changed according to the chosen main girder connection variation

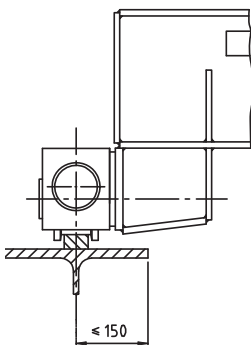
For exact measurements of the Variation 1, 2, 4, 5 please contact ABUS



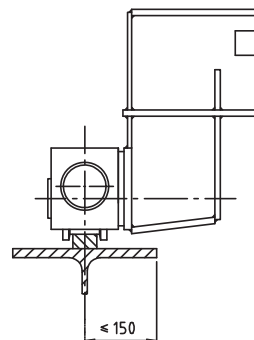
Variation 1:
top of the main girder = top of the end carriage



Variation 2:
all varieties between variation 1 and 3



Variation 4:
bottom of the main girder = top of the end carriage



Variation 5:
bottom of the main girder higher than the top of the end carriage but not more than 1500 mm between the top of the crane rail and the bottom of the main girder

Dimensions of ELV/ELK Single Girder Cranes¹⁾

Load	S ²⁾	K3	C3	L1	L2	Z min	H max ²⁾	R	LK	Wheel loads KN	
										R max	R min
Hoist type ¹⁾	m	mm	mm	mm	mm	mm	mm	mm	mm		
500 kg Chain hoist GM2 500 FEM 2m V Hoist = 1/4 m/min	5	290	480	540	440	140	8000	1900	1165	4.3	2.0
	10	290	480	540	440	140	8000	1900	1165	5.3	2.8
	15	330	480	540	440	140	8000	2200	1315	7.4	4.8
	18	410	480	540	440	140	8000	2700	1585	9.6	7.0
1000 kg Chain hoist GM4 1000 FEM 2m V Hoist = 1.3/5 m/min	5	290	520	560	450	140	6000	1900	1165	6.6	2.2
	10	290	520	560	450	140	6000	1900	1165	7.8	2.9
	15	330	520	560	450	140	6000	2200	1315	9.9	4.9
	18	410	520	560	450	140	6000	2700	1585	12.1	7.1
1600 kg Rope hoist GM 816 L6 FEM 4m V Hoist = 0.8/5 m/min	5	290	390	950	640	140	9000	1900	1165	9.8	3.0
	10	290	390	950	640	140	9000	1900	1165	11.4	3.4
	15	350	390	950	640	140	9000	2200	1315	13.7	5.4
	18	410	390	950	640	140	9000	2700	1610	15.7	7.2
2000 kg Rope hoist GM 820 L6 FEM 4m V Hoist = 0.8/5 m/min	5	290	390	950	640	140	9000	1900	1165	11.5	3.3
	10	330	390	950	640	140	9000	1900	1165	13.7	4.1
	15	370	390	950	640	140	9000	2200	1335	15.9	5.7
	18	550	380	970	770	150	9000	2700	1605	16.5	6.6
	20	650	380	970	770	150	9000	3200	1855	17.7	7.4
	22	660	380	970	770	150	9000	3200	1880	19.1	9.0
	24	760	380	970	770	170	9000	3800	2195	20.6	10.4
	26	760	430	970	770	170	9000	3800	2195	22.6	12.3
3200 kg Rope hoist GM 832 H6 FEM 2m V Hoist = 0.8/5 m/min	5	330	390	950	640	140	9000	1900	1165	16.9	4.3
	10	320	390	950	640	140	9000	1900	1165	19.7	4.9
	15	450	390	950	640	140	9000	2200	1335	22.5	7.0
	18	650	380	970	770	150	9000	2700	1605	23.1	7.6
	20	660	380	970	770	150	9000	3200	1880	24.3	8.9
	22	760	380	970	770	150	9000	3200	1880	25.6	9.8
	24	760	430	970	770	170	9000	3800	2195	28.4	12.5
	26	860	430	970	770	170	9000	3800	2195	29.6	13.7
5000 kg Rope hoist GM 1050 H6 FEM 2m V Hoist = 0.8/5 m/min	5	330	490	1030	710	140	9000	1900	1165	25.1	6.2
	10	410	490	1030	710	140	9000	1900	1185	29.3	6.6
	15	550	490	1030	710	140	9000	2200	1335	32.4	8.5
	18	660	480	1060	840	150	9000	2700	1605	33.3	9.3
	20	660	480	1060	840	150	9000	3200	1880	35.0	10.9
	22	760	480	1060	840	150	9000	3200	1880	36.5	12.1
	24	860	530	1060	840	170	9000	3800	2195	38.9	14.4
	26	1060	530	1060	840	170	9000	3800	2195	41.4	16.7

Load	S ²⁾	K3	C3	L1	L2	Z min	H max ²⁾	R	LK	Wheel loads KN	
										R max	R min
Hoist type ¹⁾	m	mm	mm	mm	mm	mm	mm	mm	mm		
6300 kg Rope hoist GM 2063 H6 FEM 1Am V Hoist = 0.8/5 m/min	5	350	490	1090	810	140	9000	1900	1165	30.5	8.0
	10	470	480	1090	810	150	9000	1900	1205	36.2	8.3
	15	660	480	1170	940	150	9000	2200	1355	37.9	8.7
	18	760	480	1170	940	150	9000	2700	1630	39.9	10.0
	20	760	480	1170	940	150	9000	3200	1880	42.0	11.8
	22	860	530	1170	940	170	9000	3200	1895	43.9	13.4
	24	1060	530	1170	940	170	9000	3800	2195	46.9	16.2
	26	1060	530	1170	940	170	9000	3800	2230	48.1	17.2
8000 kg Rope hoist GM 3080 H6 FEM 3m V Hoist = 0.8/5 m/min	5	550	560	1210	990	150	10000	1900	1205	37.1	11.3
	10	560	560	1210	990	150	10000	1900	1205	43.1	8.8
	15	660	560	1210	990	150	10000	2200	1380	47.6	10.5
	18	760	560	1210	990	170	10000	2700	1645	50.7	12.6
	20	760	610	1210	990	170	10000	3200	1895	53.1	14.6
	22	860	610	1210	990	170	10000	3200	1895	54.6	15.7
	24	1060	610	1210	990	180	10000	3800	2215	58.3	19.0
	26	1060	610	1210	990	180	10000	3800	2250	60.0	20.5
10 000 kg Rope hoist GM 3100 L6 FEM 2m V Hoist = 0.66/4 m/min	5	560	560	1210	990	150	10000	1900	1205	45.2	13.5
	10	560	560	1210	990	170	10000	1900	1220	52.8	10.6
	15	760	560	1210	990	170	10000	2200	1395	57.5	11.9
	18	860	610	1210	990	170	10000	2700	1645	60.8	14.0
	20	1060	610	1210	990	170	10000	3200	1895	63.4	16.1
	22	1060	610	1210	990	170	10000	3200	1895	64.8	17.0
	24	1060	610	1210	990	180	10000	3800	2215	69.9	21.6

¹⁾ Safety distance according to national regulations. For exact measurements please contact ABUS

²⁾ Larger span cranes, other hoist specifications are available

Note 1:
The data apply to EOT cranes with power supply via energy chain system.

