



Features & benefits ↓

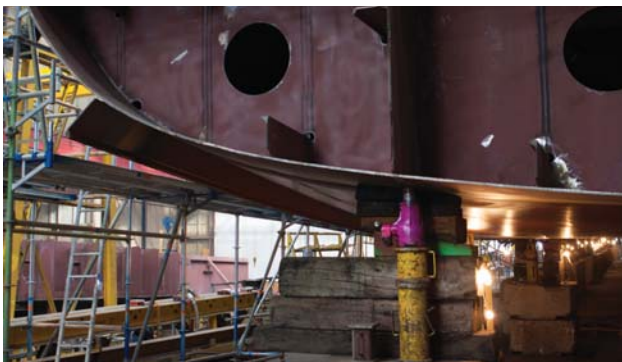
- Made of cast iron; resistant to continuous heavy operating conditions
- Unique ratchet handle for engagement both wheel and plunger
- Self-locking; for safe working
- Robust; can be used close to welding works and under water
- Low maintenance
- A range of 13 models with different capacities and stroke lengths
- Almost all jacks have a handle

Standard supplied with ↓

- Handle bar

Traversing beds
Base plates

page 127
page 129



Mechanical tools - Jacks

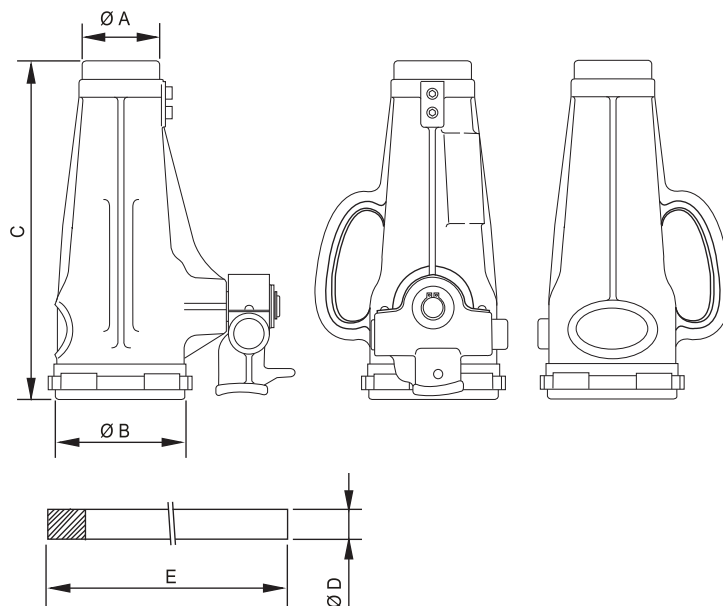


model	JJ 1015	JJ 1513	JJ 2513	JJ 2525	JJ 2533	JJ 3020
art no	200.401.001	200.401.011	200.401.021	200.102.001	200.102.005	200.102.002
tonnage	t 10	15	25	25	25	30
stroke	mm 150	125	125	250	330	200
closed height	mm 280	255	255	395	485	350
capacity	kN/t 98.1 / 10	147.2 / 15	245.3 / 25	245.3 / 25	245.3 / 25	294 / 30
weight, ready for use	kg 12.0	12.0	16.0	21.0	25.0	26.0

Mechanical tools - Jacks (dimensions)



model	JJ 1015	JJ 1513	JJ 2513	JJ 2525	JJ 2533	JJ 3020
dimension A	mm 65	63	77	77	77	95
dimension B	mm 108	113	127	127	127	148
dimension C	mm 280	255	255	395	485	350
dimension D	mm 25	25	25	25	25	25
dimension E	mm 600	600	700	700	700	700



Mechanical tools - Jacks

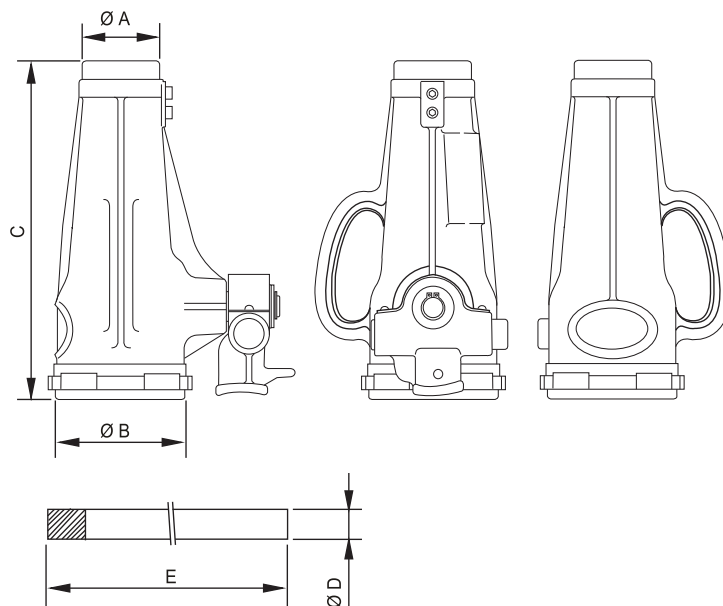


model	JJ 3513	JJ 3525	JJ 3535	JJ 5013	JJ 5025	JJ 5035
art no	200.401.031	200.102.003	200.102.006	200.401.041	200.102.004	200.102.007
tonnage	t 35	35	35	50	50	50
stroke	mm 130	250	350	130	250	350
closed height	mm 280	410	535	290	445	555
capacity	kN/t 343.4 / 35	343.4 / 35	343.4 / 35	490.5 / 50	490.5 / 50	490.5 / 50
weight, ready for use	kg 24.0	32.0	37.0	31.0	42.0	47.0

Mechanical tools - Jacks (dimensions)



model	JJ 3513	JJ 3525	JJ 3535	JJ 5013	JJ 5025	JJ 5035
dimension A	mm 87	87	87	105	105	105
dimension B	mm 147	147	147	166	166	166
dimension C	mm 280	410	535	290	445	555
dimension D	mm 32	32	32	32	32	32
dimension E	mm 700	700	700	800	800	800



Mechanical tools - Jacks



model	JJ 10011	
art no	200.401.051	
tonnage	t	100
stroke	mm	105
closed height	mm	310
capacity	kN/t	981 / 100
weight, ready for use	kg	75.0

Mechanical tools - Jacks (dimensions)



model	JJ 10011	
dimension A	mm	127
dimension B	mm	235
dimension C	mm	310
dimension D	mm	32
dimension E	mm	1500

