

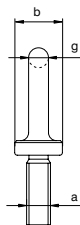
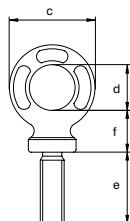


Green Pin® Lifting Eye Length as DIN580 GR8

Grade 8 lifting eye length as DIN580



ALDIN



- **Material:** alloy steel, grade 8, quenched and tempered
- **Safety factor:** MBL equals 5 x WLL
- **Finish:** painted red or white
- **Temperature range:** -40°C up to +200°C
- **Certification:** 2.1 2.2 3.1 MPI ^b CE

working load limit	diameter thread	diameter base	diameter eye outside	diameter eye inside	length	thickness base	diameter	weight each
t	a mm	b mm	c mm	d mm	e mm	f mm	g mm	kg
0.2	M6 x 1.00	20	34	20	13	17	7	0.05
0.4	M8 x 1.25	20	34	20	13	17	7	0.05
0.7	M10 x 1.50	20	38	22	17	19	8	0.07
1	M12 x 1.75	25	47	27	21	23	10	0.13
1.2	M14 x 2.00	30	57	30	27	27	14	0.24
1.5	M16 x 2.00	36	63	35	27	31	14	0.34
2	M18 x 2.50	36	63	35	30	31	14	0.38
2.5	M20 x 2.50	40	72	40	30	34	16	0.52
3	M22 x 2.50	42	82	45	36	38	19	0.67
4	M24 x 3.00	55	95	55	36	40	20	0.99
5	M27 x 3.00	55	95	55	45	40	20	1.08
6	M30 x 3.50	60	108	60	45	49	24	1.66
7	M33 x 3.50	60	108	60	54	49	24	1.74
8	M36 x 4.00	65	118	68	54	47	25	2.01
9	M39 x 4.00	65	118	68	63	47	25	2.08
10	M42 x 4.50	70	142	80	63	61	31	3.37
15	M45 x 4.50	70	142	80	68	61	31	3.47
18	M48 x 5.00	95	181	97	68	68	42	7.17
20	M52 x 5.00	95	181	97	78	68	42	7.25
25	M56 x 5.50	95	181	97	78	68	42	7.52
30	M60 x 5.50	95	181	97	90	68	42	7.78
36	M64 x 6.00	95	181	97	90	68	42	8.12