

# 5PTC10 / 5PTC20

## **COMMANDER** SERIES

Like a favorite tool in your toolbox, Thern Commander Series portable davit cranes are ideal for many applications. Their sturdy design makes them both affordable and easy-to-use.



500 kg (1100 lb)  
Capacity  
Portable Davit Cranes

- Portable
- Rugged and affordable
- Quick-Mount Winch Bracket
- Roller Bearing for Easy 360° Rotation
- Manual or Power Winch Operation
- Corrosion-Resistant Finishes
- Easy, No-Tools Assembly/Disassembly
- Variety of Bases
- 2-Year Warranty



Model 5PTC10-M1  
Base 5BP10



Winona, MN USA | [www.thern.com](http://www.thern.com)

# COMMANDER SERIES

## **COMMANDER** **1000**

### NEW FEATURES

#### CLEVIS PIN

The sheave clevis pin is now D-Shaped to prevent the clevis pin from roating when under light loads.

#### QUICK-MOUNT WINCH BRACKET

A variety of Thern winches can be attached to the bracket. After a winch is attached to the bracket, the bracket is easily mounted (without tools) to the crane via quick-connect pins.

#### AUXILIARY ATTACHMENT HOLE

Allows for various load attachments or two part line configurations.

#### MAST CAP

A cap (not visible) on top of the mast helps keep weather and debris out of the mast.

#### ROTATION HANDLE

The new rotation handle position does not interfere with the operation of the boom angle adjustment screw jack.

#### BASE EXTENSION

The optional base extension is ideal for use with the flush mount or wall mount base options to maintain crane height for obstacle clearance or when additional 15" (38 mm) height is required.

#### BASE CAP

Base cap with lanyard, keeps water and debris out when crane is removed.

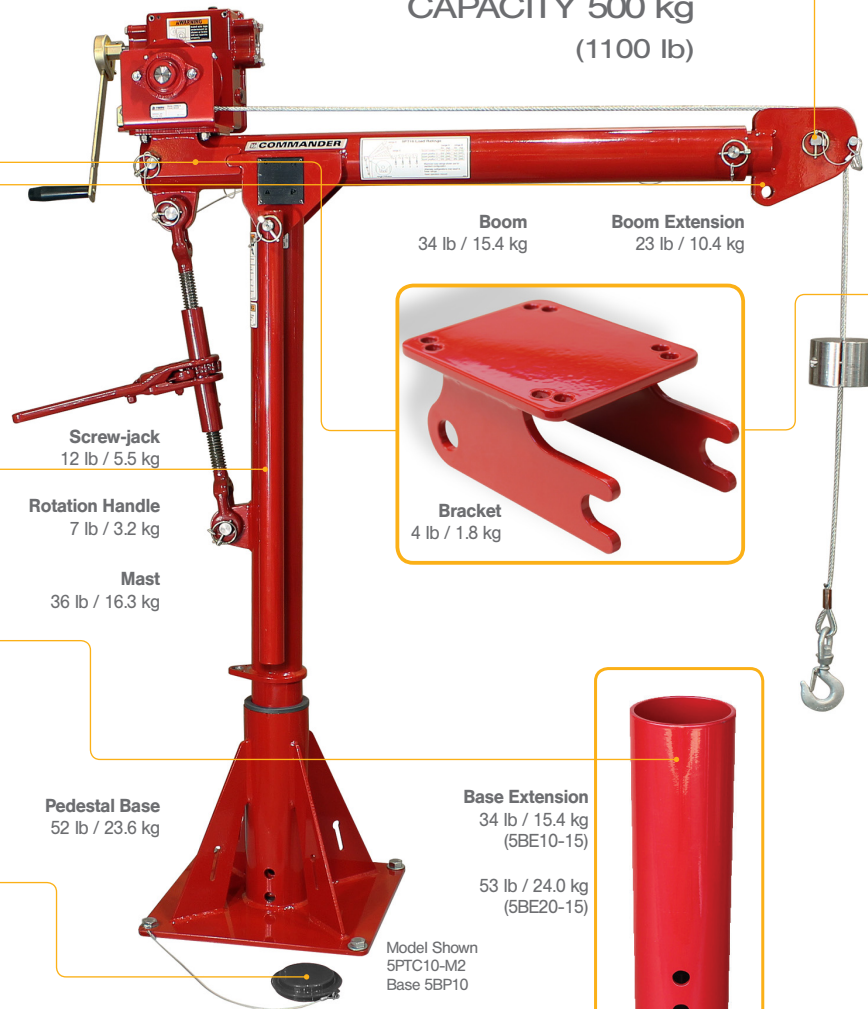
#### ROLLER/BALL BEARING

Optional on the Commander Series Davits, the specially designed roller/ball bearing at top of base requires no tools for installation. The roller/ball bearing allows smooth and easy 360° crane rotation under load.

#### STAINLESS STEEL LOCK

Stainless steel lock assembly keeps crane in position during winch operation and when not in use. Included with roller/ball bearing.

SERIES 5PTC10  
CAPACITY 500 kg  
(1100 lb)



**Boom**  
34 lb / 15.4 kg

**Boom Extension**  
23 lb / 10.4 kg



**Bracket**  
4 lb / 1.8 kg

**Screw-jack**  
12 lb / 5.5 kg

**Rotation Handle**  
7 lb / 3.2 kg

**Mast**  
36 lb / 16.3 kg

**Pedestal Base**  
52 lb / 23.6 kg

**Base Extension**  
34 lb / 15.4 kg  
(5BE10-15)

53 lb / 24.0 kg  
(5BE20-15)

Model Shown  
5PTC10-M2  
Base 5BP10

**Bearing**  
9 lb / 4.1 kg (5PT10BRG)  
11 lb / 5.0 kg (5PT20BRG)

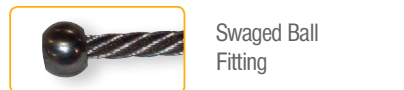
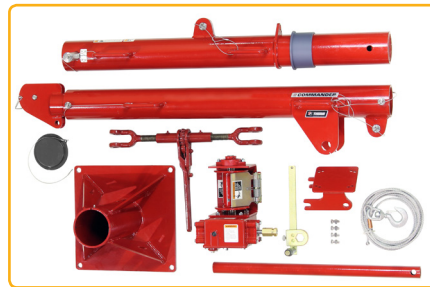


Thern products are not for lifting people or things over people.

# FEATURES AND BENEFITS

## **COMMANDER 2000**

**SERIES 5PTC20  
CAPACITY 500 kg  
(1100 lb)**



Wire Rope  
Keeper

Wire Rope  
Cable Reel



Pedestal



Flush Mount



Wall Mount



Wheel Base

## TRADITIONAL FEATURES

### MANUAL OR POWER OPERATION

Thern davit cranes can be configured with a manual winch for short, infrequent lifts or a power winch for longer lifts or heavier loads. Choose from Thern's spur or worm gear hand winches or power winches. Power winch available with upper travel limit switch.

### EASY ADJUSTABLE BOOM

Boom extends to four positions with quick-release pin and adjusts angle with ratchet.

### CORROSION RESISTANT FINISH

Electrostatic powder coated crane and stainless steel fasteners combine to resist corrosion in harsh environments. Other options available include galvanized and stainless steel.

### EASY ASSEMBLY/DISASSEMBLY

Quick-release clevis style stainless steel pins allow for easy assembly and quick disassembly for transport or storage. No tools required.

### QUICK DISCONNECT ANCHOR

For quickly attaching or removing wire rope equipped with a swaged ball fitting - Allows the operator to leave the wire rope attached to the load at all times and simply remove the rope from the winch and attach to the optional wire rope keeper or cable reel.

### VARIETY OF BASES

Pedestal, flush and wall mount bases allow for a variety of mounting solutions and are easily installed to a variety of solid surfaces with anchor bolts or other fastening methods. Bases sold separately. Base cap included with lanyard keeps water and debris out of base when crane is removed.

### 2-YEAR WARRANTY

Industry-leading two-year limited warranty on all our products.



# CRANES AND WINCHES

## **COMMANDER** **SERIES**

### FINISHES

#### Crane Finishes for Commander Series

All cranes come standard with Electrostatic Powder Coat red finish. Optional finishes also offered are Galvanized and 304 Stainless Steel.



powder coat



galvanized

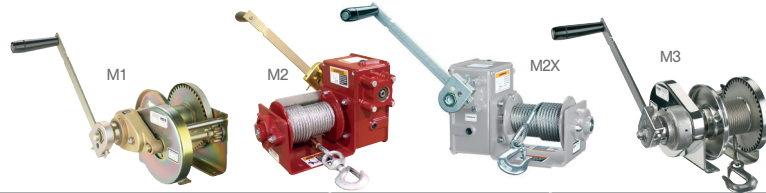


304 stainless steel

Finish	Code	Model Number		Options	Description
		CMDR 1000	CMDR 2000		
Powder Coat (Red)	-	5PTC10	5PTC20	Standard N/C	Red electrostatic powder coating applied to all cranes - Good
Galvanized	G	5PTC10G	5PTC20G	Optional/Extra	An economical choice that provides extra protection - Better
304 Stainless Steel	S	5PTC10S	5PTC20S	Optional/Extra	Electro-polished for added protection - Premium

### WINCHES

#### For Commander Series



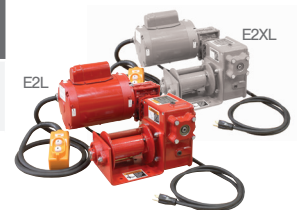
#### Hand Winches

Winch	Winch Model No.	Description	Finish	Approx. Ship Weight
M1	M4312PB-K	Spur gear hand winch with brake	Zinc Plated	27 lbs 13 kg
M2	4WM2-K	Worm gear hand winch with brake	Red Enamel	42 lbs 19.1 kg
M2X	4WM2EGRA-K	Worm gear hand winch with brake	Epoxy Paint (Gray)	42 lbs 19.1 kg
M3	M4312PBSS-K	Stainless steel spur gear hand winch with brake	Stainless Steel	27 lbs 13 kg

All hand winches include disc brake for load control and steel gear covers to protect gears and help prevent injuries. NOTE: Worm gear requires more turns with less effort than a spur gear winch.

### Electric Winches

Electric Winch	Model No.	Line Speed		Finish	Power	Control (Pendant)	Approx. Ship Weight	
		1st Layer	Full Drum					
E2L	4WP2-KL	8 fpm	13 fpm	Enamel Paint	230 Volt, AC, Single Phase	6 ft	85 lbs	39 kg
E2XL	4WP2EGRA-KL	8 fpm	13 fpm	Epoxy Paint	230 Volt, AC, Single Phase	6 ft	85 lbs	39 kg



Electric winches mount on boom via quick mount bracket and are equipped with internal break for load control. Available with upper travel limit switch.

These products are not for lifting people, or things over people.

#### **IMPORTANT:**

It is the owner or operator's responsibility to determine the suitability of the equipment to its intended use. Study all applicable codes, manuals and regulations. Be sure to read the Owner's Manual supplied with the equipment before operating it.



# BASES AND WIRE ROPE

## **COMMANDER** SERIES

### **BASES** (sold separately) For Commander Series

Select the appropriate base(s) for your application from the chart below. Matching your crane with multiple bases provides optimal worksite flexibility and an economical solution for servicing multiple lift stations.



Finish	Pedestal		Flush		Wall		Wheel		Extension*	
	5PTC10	5PTC20	5PTC10	5PTC20	5PTC10	5PTC20	5PTC10	5PTC20	5PTC10	5PTC20
Powder Coat Paint	5BP10	5BP20	5BF10	5BF20	5BW10	5BW20	5BR10	5BR20	5BE10-15	5BE20-15
Galvanized	5BP10G	5BP20G	5BF10G	5BF20G	5BW10G	5BW20G	—	—	5BE10-15G	5BE20-15G
304 Stainless Steel	5BP10S	5BP20S	5BF10S	5BF20S	5BW10S	5BW20S	—	—	5BE10-15S	5BE20-15S
Approximate Ship Weight	56 lbs (25.4 kg)	71 lbs (32.2 kg)	47 lbs (21.3 kg)	62 lbs (28.1 kg)	52 lbs (23.6 kg)	72 lbs (32.7 kg)	238 lbs (108.0 kg)	351 lbs (159.2 kg)	33 lbs (14.9 kg)	53 lbs (24.0 kg)

\*Ideal for use with flush or wall mount bases to retain crane mast height. (Use with other bases, except wheel base, where additional height is needed.)

### **WIRE ROPE Assembly** (sold separately) For Commander Series



Wire Rope Length	Galvanized Aircraft Cable 1/4" (6.4mm) Diameter	304 Stainless Steel Rope 1/4" (6.4mm) Diameter
20 ft - 6 m	WA25-20NS	WS25-20NS
28 ft - 8.5 m	WA25-28NS	WS25-28NS
36 ft - 10.9 m	WA25-36NS	WS25-36NS
45 ft - 13.7 m	WA25-45NS	WS25-45NS
60 ft - 18.2 m	WA25-60NS	WS25-60NS
75 ft - 22.8 m	WA25-75NS	WS25-75NS

These winches and cranes are sold without wire rope. However, we carry top quality wire rope assemblies optimally designed for use with our winches and cranes. The assemblies above are equipped with a swivel hook and a swaged ball fitting to work with quick disconnect anchor on winches.

These products are not for lifting people, or things over people.

#### **IMPORTANT:**

It is the owner or operator's responsibility to determine the suitability of the equipment to its intended use. Study all applicable codes, manuals and regulations. Be sure to read the Owner's Manual supplied with the equipment before operating it.

# PERFORMANCE

## COMMANDER 1000

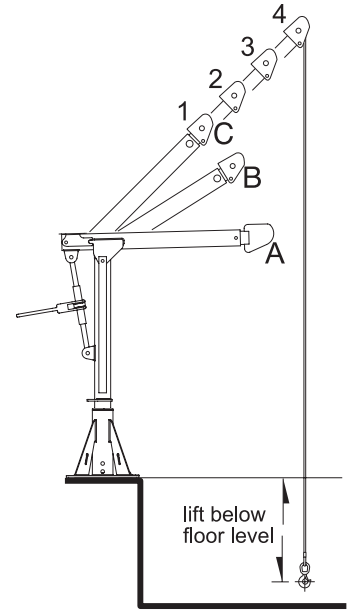
### Commander 1000 5PTC10 Lift Below Floor Level



Lift Below <sup>2</sup> Floor				Wire Rope Diameter		Wire Rope Length		Winch Configurations			
Minimum (C4)		Maximum (C1)		(in)	(mm)	(ft)	(m)	M1	M2	M3	E2L
(ft)	(m)	(ft)	(m)								
2	0.6	7	2.1	1/4	6	20	6.0	x	x	x	x
10	3.0	15	4.5	1/4	6	28	8.5	x	x	x	x
18	5.4	23	7.0	1/4	6	36	10.9	x	x	x	x
27	8.2	32	9.7	1/4	6	45	13.7	x	x	x	x
42	12.8	47	14.3	1/4	6	60	18.2	x	x	x	x
57	17.3	62	18.8	1/4	6	75	22.8	-	x	-	x

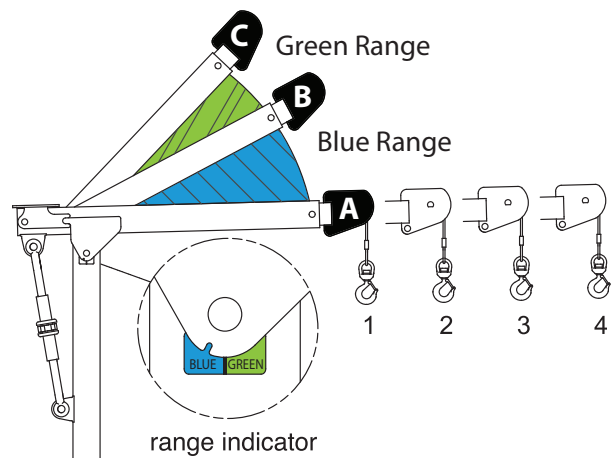
<sup>1</sup> Performance Characteristics are for standard products referred to in this manual. Non-standard products may vary from the original design. Contact Them, Inc. for this information.

<sup>2</sup> Lift below floor level varies depending on boom position and base configuration.



### Commander 1000 5PTC10 Performance Ratings<sup>1</sup>

	Boom Position	Load Rating <sup>2</sup>	
		(lb)	(kg)
BLUE RANGE	A-1	1000	450
	A-2	800	360
	A-3	650	290
	A-4	550	250
GREEN RANGE	B-1	1100	500
	B-2	950	430
	B-3	750	340
	B-4	650	290
	C-1	1100	500
	C-2	950	430
	C-3	750	340
	C-4	650	290



<sup>1</sup> Performance Characteristics are for standard products referred to in this manual. Non-standard products may vary from the original design. Contact Them, Inc. for this information.

<sup>2</sup> Load Rating based on 1/4 inch diameter wire rope with 5:56:1 breaking strength design factor.

Their products are not for lifting people, or things over people.

#### IMPORTANT:

It is the owner or operator's responsibility to determine the suitability of the equipment to its intended use. Study all applicable codes, manuals and regulations. Be sure to read the Owner's Manual supplied with the equipment before operating it.

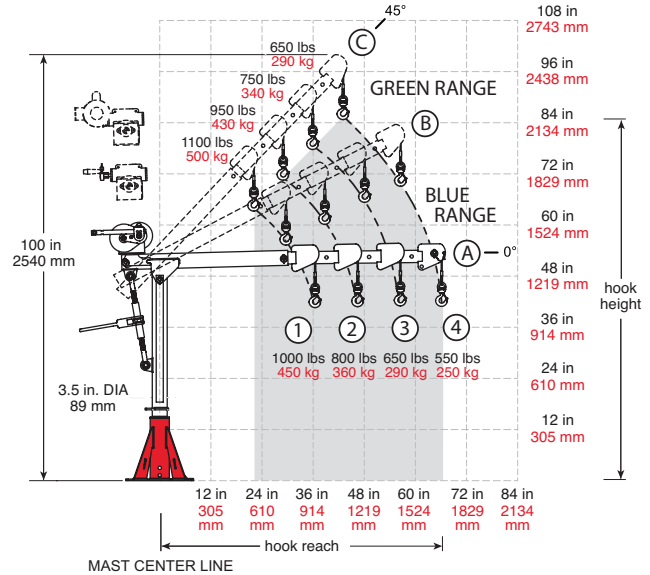
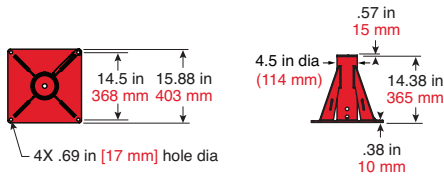
# PERFORMANCE

## COMMANDER 1000

### Commander 1000 On Pedestal Base Reach & Height Above Floor

Boom Position	Hook Reach		Hook Height	
	(in)	(mm)	(in)	(mm)
A-1	36	914	42	1066
A-2	46	1168	42	1066
A-3	56	1422	42	1066
A-4	66	1676	42	1066
<hr/>				
B-1	29	736	56	1422
B-2	38	965	60	1524
B-3	47	1193	65	1651
B-4	56	1422	69	1752
<hr/>				
C-1	22	558	64	1625
C-2	29	736	71	1803
C-3	36	914	78	1981
C-4	43	1092	85	2159

Dimensions are for reference only and subject to change without notice.



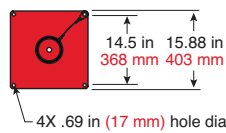
### Commander 1000 Pedestal Base 5BP10

5BP10      5BP10S  
5BP10G

### Commander 1000 On Flush or Wall-Mount Base - Reach & Height Above Floor

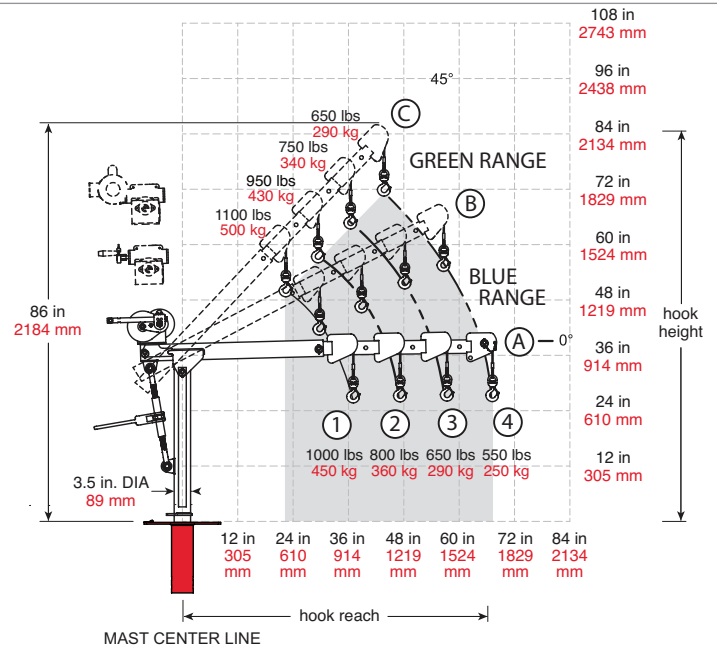
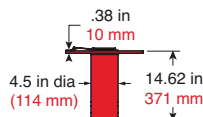
Boom Position	Hook Reach		Hook Height	
	(in)	(mm)	(in)	(mm)
A-1	36	914	28	711
A-2	46	1168	28	711
A-3	56	1422	28	711
A-4	66	1676	28	711
<hr/>				
B-1	29	736	42	1066
B-2	38	965	46	1168
B-3	47	1193	51	1295
B-4	56	1422	55	1397
<hr/>				
C-1	22	558	50	1270
C-2	29	736	57	1447
C-3	36	914	64	1625
C-4	43	1092	71	1803

Dimensions are for reference only and subject to change without notice.



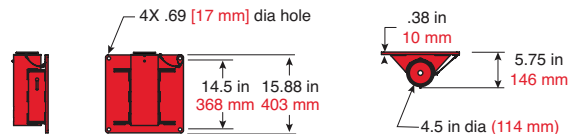
### Commander 1000 Flush Base 5BF10

5BF10  
5BF10G  
5BF10S



### Commander 1000 Wall-Mount Base 5BW10

5BW10  
5BW10G  
5BW10S



#### IMPORTANT:

It is the owner or operator's responsibility to determine the suitability of the equipment to its intended use. Study all applicable codes, manuals and regulations. Be sure to read the Owner's Manual supplied with the equipment before operating it.

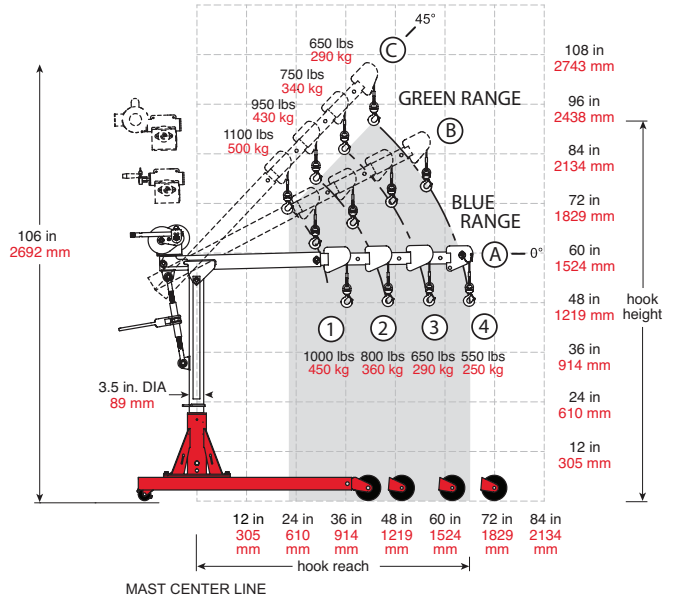
# PERFORMANCE

## Commander 1000 on Wheel Base

# COMMANDER 1000



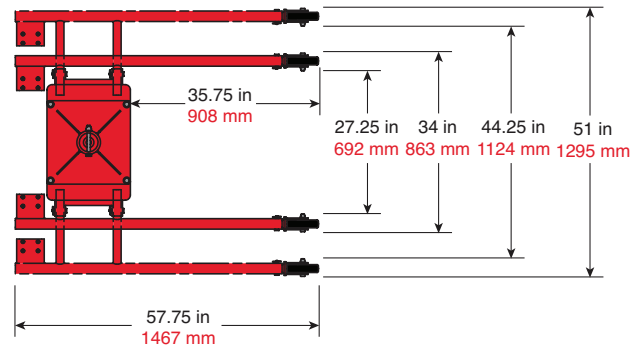
**IMPORTANT:**  
Crane DOES NOT rotate when assembled  
in 5BR wheel base.



## Commander 1000 On Wheel Base Reach & Height Above Floor

Boom Position	Hook Reach		Hook Height	
	(in)	(mm)	(in)	(mm)
A-1	36	914	48	1219
A-2	46	1168	48	1219
A-3	56	1422	48	1219
A-4	66	1676	48	1219
B-1	29	736	62	1574
B-2	38	965	66	1676
B-3	47	1193	71	1803
B-4	56	1422	75	1905
C-1	22	558	70	1778
C-2	29	736	77	1955
C-3	36	914	84	2133
C-4	43	1092	91	2311

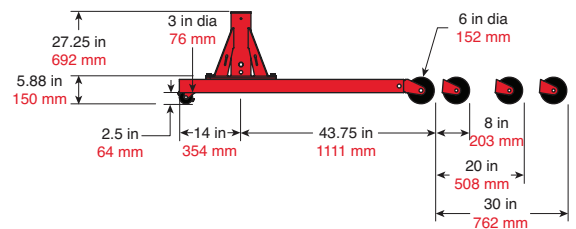
Dimensions are for reference only and subject to change without notice.



## Commander 1000 Wheel Base Load Ratings

Boom Position	Leg Pos 1		Leg Pos 2		Leg Pos 3		Leg Pos 4		
	(lb)	(kg)	(lb)	(kg)	(lb)	(kg)	(lb)	(kg)	
A/C-1	<b>SEE LOAD RATINGS ON CRANE</b>								
A/C-2									
A/C-3									DO NOT USE
A/C-4									DO NOT USE

Dimensions are for reference only and subject to change without notice.



These products are not for lifting people or things over people.

### IMPORTANT:

It is the owner or operator's responsibility to determine the suitability of the equipment to its intended use. Study all applicable codes, manuals and regulations. Be sure to read the Owner's Manual supplied with the equipment before operating it.



# PERFORMANCE

## COMMANDER 2000

### Commander 2000

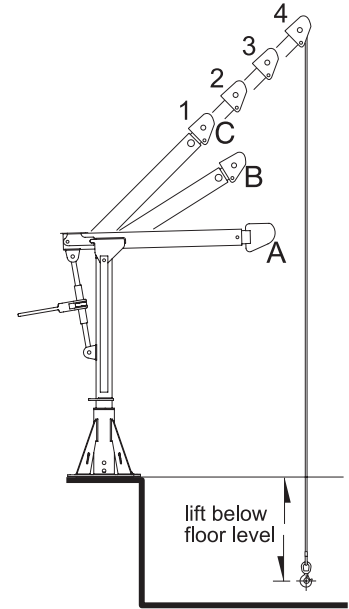
#### 5PTC20 Lift Below Floor Level



Lift Below <sup>2</sup> Floor				Wire Rope Diameter		Wire Rope Length		Winch Configurations			
Minimum (C4)		Maximum (C1)		(in)	(mm)	(ft)	(m)	M1	M2	M3	E2L
(ft)	(m)	(ft)	(m)								
0	0.0	5	1.5	1/4	6	20	6.0	x	x	x	x
8	2.4	13	3.9	1/4	6	28	8.5	x	x	x	x
16	4.8	21	6.4	1/4	6	36	10.9	x	x	x	x
25	7.6	30	9.1	1/4	6	45	13.7	x	x	x	x
40	12.1	45	13.7	1/4	6	60	18.2	x	x	x	x
55	16.7	60	18.2	1/4	6	75	22.8	-	x	-	x

<sup>1</sup> Performance Characteristics are for standard products referred to in this manual. Non-standard products may vary from the original design. Contact Them, Inc. for this information.

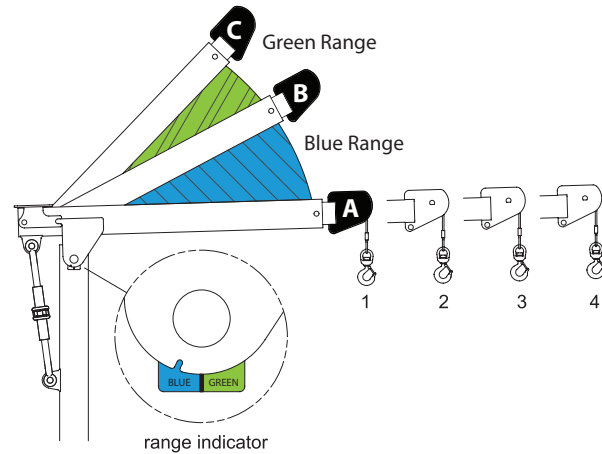
<sup>2</sup> Lift below floor level varies depending on boom position and base configuration.



### Commander 2000

#### 5PTC20 Performance Ratings<sup>1</sup>

	Boom Position	Load Rating <sup>2</sup>	
		(lb)	(kg)
BLUE RANGE	A-1	1100	500
	A-2	1100	500
	A-3	1100	500
	A-4	1100	500
GREEN RANGE	B-1	1100	500
	B-2	1100	500
	B-3	1100	500
	B-4	1100	500
	C-1	1100	500
	C-2	1100	500
	C-3	1100	500
	C-4	1100	500



<sup>1</sup> Performance Characteristics are for standard products referred to in this manual. Non-standard products may vary from the original design. Contact Them, Inc. for this information.

<sup>2</sup> Load Rating based on 1/4 inch diameter wire rope with 5:56:1 breaking strength design factor.

Them products are not for lifting people or things over people.

#### IMPORTANT:

It is the owner or operator's responsibility to determine the suitability of the equipment to its intended use. Study all applicable codes, manuals and regulations. Be sure to read the Owner's Manual supplied with the equipment before operating it.

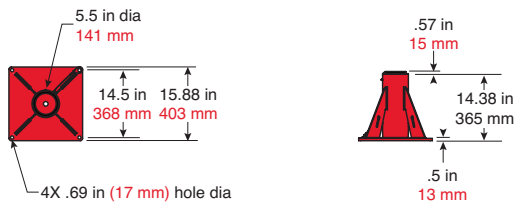
# PERFORMANCE

## COMMANDER 2000

### Commander 2000 On Pedestal Base Upright Reach & Height Above Floor

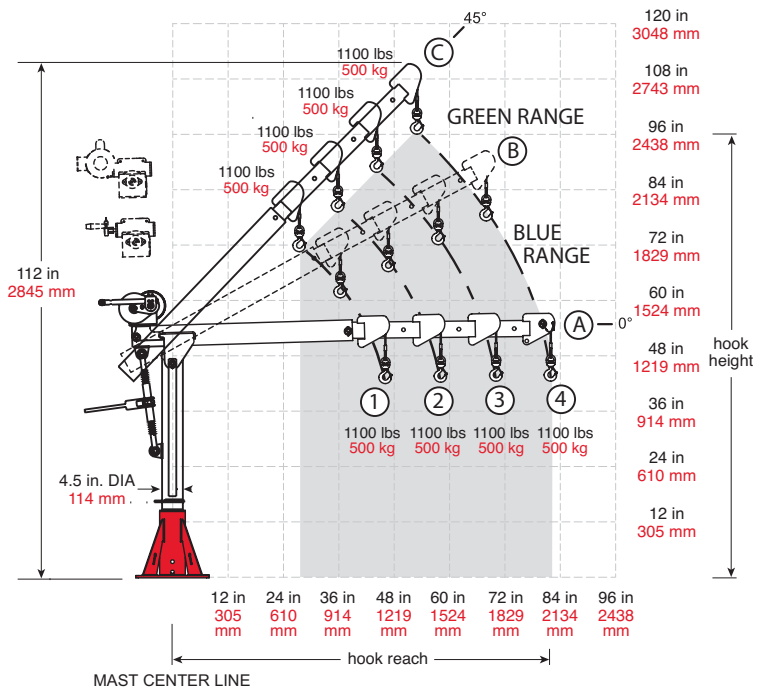
Boom Position	Hook Reach		Hook Height	
	(in)	(mm)	(in)	(mm)
A-1	46	1168	43	1092
A-2	58	1473	43	1092
A-3	70	1778	43	1092
A-4	82	2082	43	1092
B-1	37	939	61	1549
B-2	48	1219	67	1701
B-3	58	1473	72	1828
B-4	69	1752	78	1981
C-1	28	711	71	1803
C-2	36	914	80	2032
C-3	45	1143	88	2235
C-4	53	1346	97	2463

Dimensions are for reference only and subject to change without notice.



### Commander 2000 Pedestal Base 5BP20

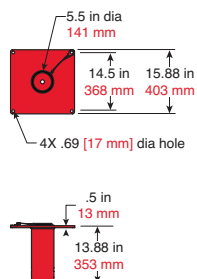
5BP20  
5BP20S  
5BP20G



### Commander 2000 on Flush or Wall-Mount Base - Reach & Height Above Floor

Boom Position	Hook Reach		Hook Height	
	(in)	(mm)	(in)	(mm)
A-1	46	1168	29	736
A-2	58	1473	29	736
A-3	70	1778	29	736
A-4	82	2082	29	736
B-1	37	939	47	1193
B-2	48	1219	53	1346
B-3	58	1473	58	1473
B-4	69	1752	64	1625
C-1	28	711	57	1447
C-2	36	914	66	1676
C-3	45	1143	74	1879
C-4	53	1346	83	2108

Dimensions are for reference only and subject to change without notice.

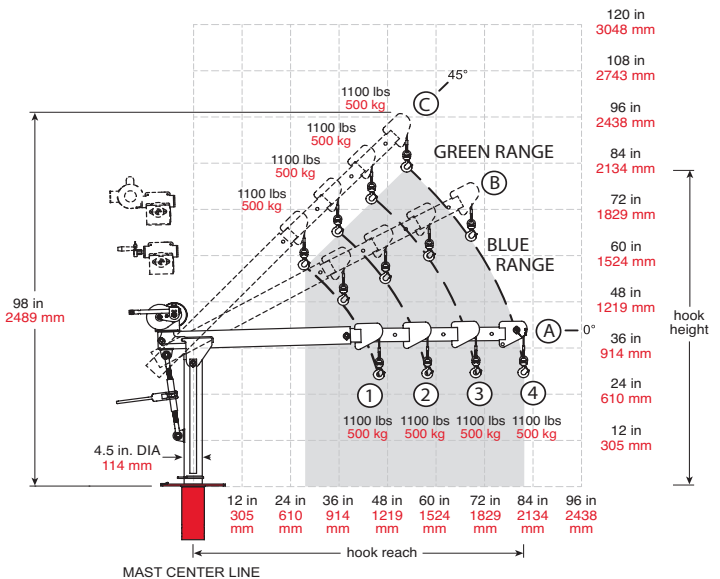
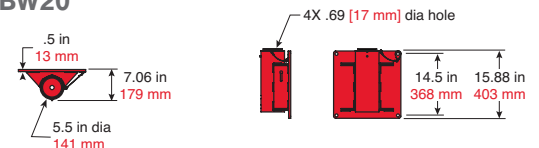


### Commander 2000 Flush Base 5BF20

5BF20  
5BF20G  
5BF20S

### Commander 2000 Wall-Mount Base 5BW20

5BW20  
5BW20G  
5BW20S



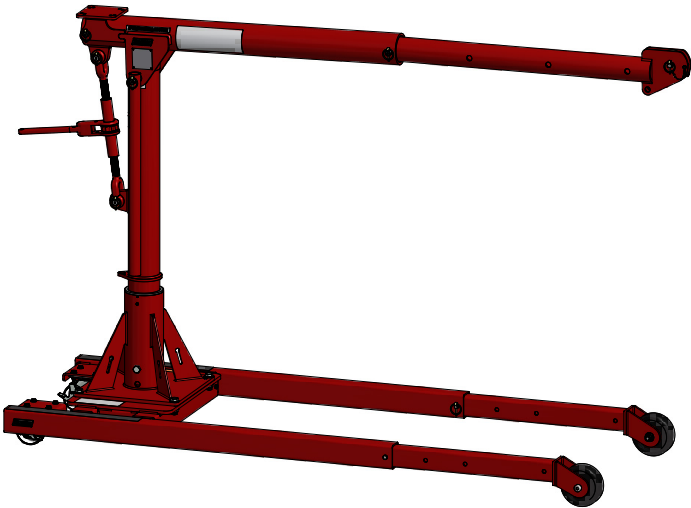
### IMPORTANT:

It is the owner or operator's responsibility to determine the suitability of the equipment to its intended use. Study all applicable codes, manuals and regulations. Be sure to read the Owner's Manual supplied with the equipment before operating it.

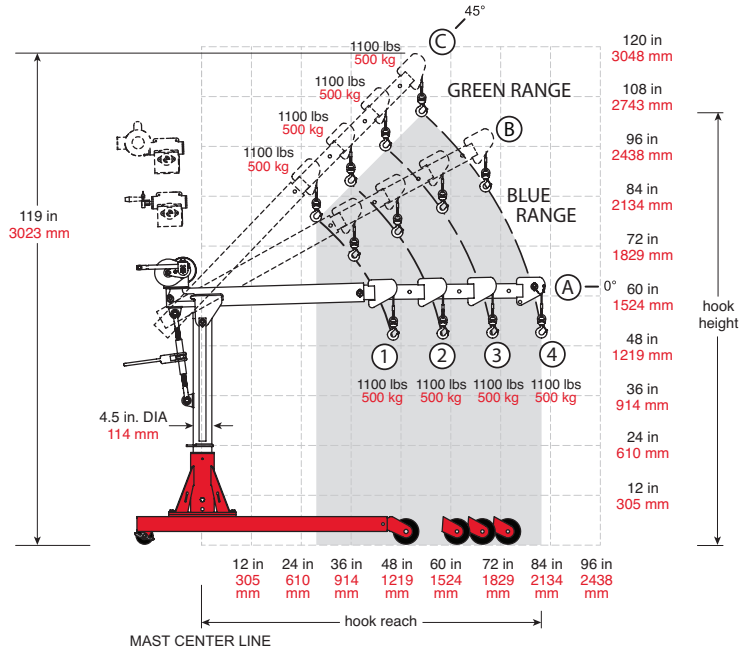
# PERFORMANCE

## COMMANDER 2000

### Commander 2000 on Wheel Base



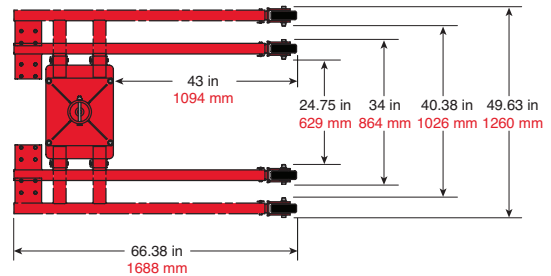
**IMPORTANT:**  
Crane DOES NOT rotate when assembled in 5BR20 wheel base.



### Commander 2000 On Wheel Base Reach & Height Above Floor

Boom Position	Hook Reach		Hook Height	
	(in)	(mm)	(in)	(mm)
A-1	46	1168	43	1092
A-2	58	1473	43	1092
A-3	70	1778	43	1092
A-4	82	2082	43	1092
B-1	37	939	68	1727
B-2	48	1219	74	1879
B-3	58	1473	79	2006
B-4	69	1752	85	2159
C-1	28	711	78	1981
C-2	36	914	87	2209
C-3	45	1143	95	2413
C-4	53	1346	104	2641

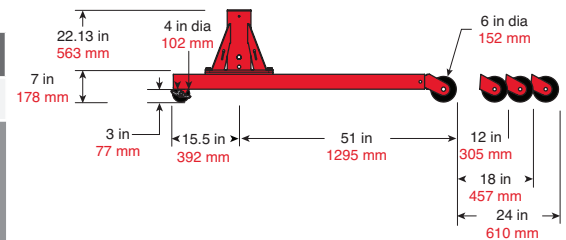
Dimensions are for reference only and subject to change without notice.



### Commander 2000 Wheel Base Load Ratings

Boom Position	Leg Pos 1		Leg Pos 2		Leg Pos 3		Leg Pos 4			
	(lb)	(kg)	(lb)	(kg)	(lb)	(kg)	(lb)	(kg)		
A/C-1	<b>SEE LOAD RATINGS ON CRANE</b>									
A/C-2									DO NOT USE	
A/C-3									DO NOT USE	
A/C-4									DO NOT USE	

Dimensions are for reference only and subject to change without notice.



These products are not for lifting people or things over people.

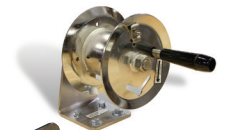
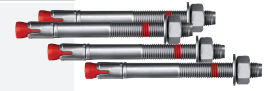
### IMPORTANT:

It is the owner or operator's responsibility to determine the suitability of the equipment to its intended use. Study all applicable codes, manuals and regulations. Be sure to read the Owner's Manual supplied with the equipment before operating it.

# ACCESSORIES AND OPTIONS

## Accessories for Commander Series

Item	Part Number	Description
Base Anchor Kit	AN16mm-145	4 Hilti® Zinc Plated Steel fasteners STL HST3
	AN16mm-145S	4 Hilti® 304 Stainless Steel fasteners SST304 HST3
Roller/Ball Bearing	5PT10BRG	Red electrostatic powder coat paint finish - Good
	5PT10BRG-S	304 Stainless steel electro-polished finish for added protection -Premium
	5PT10BRG-SS	304 Stainless steel electro-polished finish for use with Stainless Steel Base only
Drill-Drive Kit	ED220-MT03-50HZ	230 VAC, 3 amp, 220rpm drill-motor to power drive the hand winch. Only available for cranes configured with the M2 winch option. Includes 1-1/8" hex drive socket.
	ED200-MT05-50HZ	Cordless drill kit, 200rpm drill-motor to power drive the M2 hand winch option. Includes 1-1/8" hex drive socket.
Headache Ball	HB10-12-25	Red Painted 10lb fits 1/8" (3.2 mm) to 1/4" (6.4 mm) Rope
	HB10S-12-25	Stainless Steel 10lb fits 1/8" (3.2 mm) to 1/4" (6.4 mm) Rope
Cable Spooler	RW50	316 stainless steel reel winds up wire rope when detached from crane.
Wire Rope Keeper	RK19-25S RK19-25S316	Stainless steel bracket attaches to base or other structure to hold free end of the wire rope when detached from the crane.



## Additional Options for Commander Series

Thern offers a variety of additional options you can choose to enhance your davit crane.

### • FACTORY LOAD TEST

Upon request, Thern can test your crane prior to shipping, up to 125% of rated load.

### • EXTENDED 5-YEAR WARRANTY

Extend our standard 2-year warranty to 5 years .

### • ATEX CLASSIFICATION

Specially rated for use in explosive settings. Available upon request at time of order.

### • POWER WINCH OPERATION

AC electric in any voltage. DC electric, hydraulic and pneumatic power winches available.

### • CUSTOM ELECTRIC CONTROLS

Thern can build the high quality controls you need to operate your equipment.

### • LIMIT SWITCH

Add an emergency safety shut-off to ensure safe operation.



ATEX

## Customization

Customization is available for almost all Thern products and should always be performed by our engineers to assure the changes meet our stringent quality standards. Below are some of our more common customization requests. Only factory modifications are covered under warranty.

### • LONGER LIFT DISTANCES

Customized winch and crane configurations to accommodate longer lifts.



### • CUSTOM COLORS & FINISHES

Custom colors and finishes are available to match your unique application

### • EXTENDED BOOM AND MASTS

Thern can extend mast heights and boom lengths to fit your needs

### • RELOCATE THE WINCH

The winch can be relocated to fit confined spaces or height restrictions

### • SPECIAL BASES

Custom bases or mounting requirements can be manufactured to meet your unique situation



**Thern, Incorporated**  
 World Headquarters  
 5712 Industrial Park Road  
 Winona, MN USA  
 1-800-843-7648  
 Phone: 1-507-454-2996  
 www.thern.com

**Thern Europe**  
 Bedrijvenpark Twente 454e  
 7602 KM Almelo, Netherlands  
 Phone: +31-546-898-380  
 europe@thern.com