

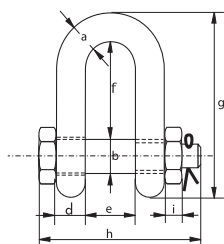


Green Pin® Standard Shackles

dee shackles with safety bolt



G-4153



- **Material** : bow and pin high tensile steel, Grade 6, quenched and tempered
- **Safety Factor** : MBL equals 6 x WLL
- **Standard** : EN 13889, ASME B30.26 and meets performance requirements of US Fed. Spec. RR-C-271 Type IVB Class 3, Grade A
- **Temperature Range** : -40°C up to +200°C
- **Certification** : 2.1 2.2 3.1 MTC^a DNV 2.7-1^a* DNV 2.7-1^b* DNV 2.22 CE

working load limit	diameter bow	diameter pin	diameter eye	width eye	width inside	length inside	length	length bolt	thickness nut	weight each
t	a mm	b mm	c mm	d mm	e mm	f mm	g mm	h mm	i mm	kg
2	13.5	16	34	13	22	43	81	82	13	0.39
3.25	16	19	40	16	27	51	97	98	17	0.67
4.75	19	22	46	19	31	59	112	114	19	1.08
6.5	22	25	52	22	36	73	134	130	22	1.66
8.5	25	28	59	25	43	85	154	150	25	2.46
9.5	28	32	66	28	47	90	167	166	27	3.4
12	32	35	72	32	51	94	180	178	30	4.51
13.5	35	38	80	35	57	115	209	197	33	6.1
17	38	42	88	38	60	127	230	202	19	7.63
25	45	50	103	45	74	149	271	249	23	12.88
35	50	57	111	50	83	171	305	269	26	17.35
42.5	57	65	130	57	95	190	345	301	29	25.94
55	65	70	145	65	105	203	376	330	32	35.33
85	75	83	162	73	127	229	427	380	39	52.97

In inch

working load limit	diameter bow	diameter pin	diameter eye	width eye	width inside	length inside	length	length bolt	thickness nut	weight each
t	a inch	b inch	c inch	d inch	e inch	f inch	g inch	h inch	i inch	lbs
2	1/2	5/8	1 11/32	1/2	7/8	1 11/16	3 3/16	3 7/32	1/2	0.85
3.25	5/8	3/4	1 9/16	5/8	1 1/16	2	3 13/16	3 27/32	21/32	1.48
4.75	3/4	7/8	1 13/16	3/4	1 7/32	2 5/16	4 13/32	4 1/2	3/4	2.39
6.5	7/8	1	2 1/16	7/8	1 13/32	2 7/8	5 9/32	5 1/8	7/8	3.66
8.5	1	1 1/8	2 5/16	31/32	1 11/16	3 11/32	6 1/16	5 29/32	31/32	5.42
9.5	1 1/8	1 1/4	2 19/32	1 3/32	1 27/32	3 17/32	6 9/16	6 17/32	1 1/16	7.5
12	1 1/4	1 3/8	2 27/32	1 1/4	2	3 11/16	7 3/32	7	1 3/16	9.95
13.5	1 3/8	1 1/2	3 5/32	1 3/8	2 1/4	4 17/32	8 7/32	7 3/4	1 5/16	13.45
17	1 1/2	1 5/8	3 15/32	1 1/2	2 3/8	5	9 1/16	7 15/16	3/4	16.82
25	1 3/4	2	4 1/16	1 25/32	2 29/32	5 7/8	10 21/32	9 13/16	29/32	28.4
35	2	2 1/4	4 3/8	1 31/32	3 9/32	6 23/32	12	10 19/32	1 1/32	38.25
42.5	2 1/4	2 9/16	5 1/8	2 1/4	3 3/4	7 15/32	13 19/32	11 27/32	1 5/32	57.19
55	2 1/2	2 3/4	5 23/32	2 9/16	4 1/8	8	14 13/16	13	1 1/4	77.89
85	3	3 1/4	6 3/8	2 7/8	5	9 1/32	16 13/16	14 31/32	1 17/32	116.77



RFID CAD

* For shackles ≥ WLL 2 t

1
2
3
4
5
6
7
8
9
10
11
12
13
14
15
16
17
18
19
20